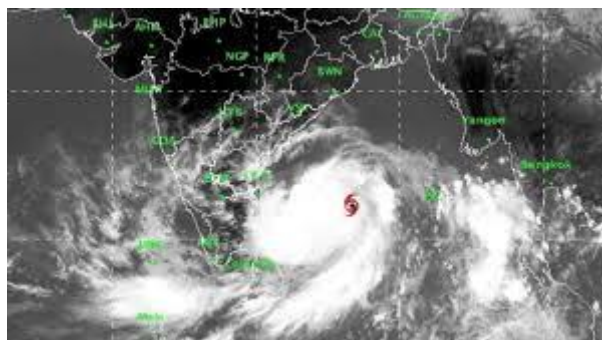


Topic in News: Fani | Category: Geography

Let's analyse this topic from different angles to have the optimum gain:

Concepts involved in this topic:

- **Severe cyclones** are defined as generating maximum windspeeds of 89-117 kmph.
- While severe cyclones can form **any time**, they tend to be concentrated in November — after the monsoon — or around May.
- The IMD ranks cyclones on a **5-point scale** with the mildest at 62-88 kmph and the strongest, a '**super cyclonic storm**', at 221 kmph.
- On an average, tropical cyclones form and make landfall in **less than a week**.

Facts involved in this topic:

- **Fani** is the first severe cyclonic storm to have formed in April in India's oceanic neighbourhood since **1976**.
- Tropical cyclones in the Indian neighbourhood begin as 'depressions' or a gradual build-up of warm air and pockets of low pressure. About 35% of such formations intensify to 'cyclones' and only 7% intensify to 'very severe cyclones'.

Seeing the topic through UPSC lens:

- What wind speeds do severe or super cyclones have?
- In which month do cyclones form the most?
- What percentage of ‘depressions’ turn to cyclones and very severe cyclones?

Illustration of how UPSC confuses/traps the candidate:

UPSC can give a statement like this which one needs to judge whether True or False:

“Majority of the depressions intensify into cyclones”.

To avoid falling in the trap, the candidate needs to be alert while going through concepts and facts. In this case, one needs to keep in mind that *only about 35% of depressions intensify to ‘cyclones’*.

Another example,

“Fani is the first severe cyclonic storm to have formed in April in India’s oceanic neighbourhood”

To avoid falling in the trap, one needs to keep in mind that Fani is the first severe cyclonic storm to have formed in April *since 1976*.

Topic Recap for Quick Revision:

- Severe cyclone: 89-117 kmph.
- Strongest Super cyclone: 221 kmph
- Concentration period of cyclones: November
- Landfall period: Less than a week
- Severe Cyclone in April: Only the second time
- Cyclones: 35% of all depressions

- Very severe cyclones: 7% of all depressions
- **Ranking of cyclones by IMD: 5-point scale**

Do you know?



The naming of tropical cyclones over north Indian Ocean commenced from September **2004**. **Hence the severe cyclonic storm that formed in April in India's oceanic neighbourhood in 1976 had no name, unlike Fani.**

This is the sample of our **PRELIMS PERIODICAL**. It will cover **Current Affairs** with the underlying criteria of **Importance** of the topic for **PRELIMINARY EXAMINATION**. This will give an idea to the aspirant about the time to be devoted on a particular topic (More important and expected topics – can be given more time rather than the least expected topics). This will help new comers especially as they cannot efficiently filter important news for the examination.

One cannot go through numerous resources as we have limited time at our disposal – Thus **PERIODICAL** will act as a Bridge between the aspirant and the success.

Note – Magazine will be available only on SUBSCRIPTION.

Disclaimer : Any act of copying , distributing this material by any person/entity will be considered as copyright infringement and legal action will be initiated against them. In case magazine is circulated in social media groups – WhatsApp / Telegram etc – the Group Admins/Creator will be held accountable as a party.